

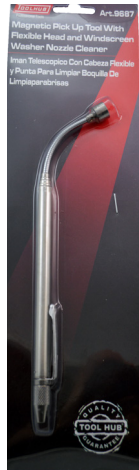
# TOOLHUB

## New Products! August 2016

### 9687 - Magnetic Pick Up Tool with Windscreen Washer Nozzle Cleaner.



Stainless Steel Flexible Magnetic Pick Up Tool Complete with a Windscreen washer Nozzle Cleaner  
Useful Pen Clip



### 9690 - 4 In 1 Circlip Pliers



4 in 1 Circlip pliers with interchangeable Heads for both Internal & External circlips

### 9691 - 2 Piece 10" Circlip Pliers Set With Replacement Tips



16 x replacement tips; 2 x 0°, 2 x 15°, 2 x 45° & 2 x 90° for internal (0.12"/3mm) & external (0.108"/2.75mm) pliers  
With comfort grip Insulated handles

### 9692 - 2 Piece 16" Circlip pliers set



2pc 16"/400mm Circlip Plier Set, complete with Interchangeable Tips.  
Comfort Grip Handles.

### 9693 - Snap ring pliers set 12 Piece



4 sizes (0.038", 0.047", 0.070" and .090"), each in 3 tip angles: 45- and 90-degree tips, plus straight-tip  
Heavy-Duty heat treated chrome moly steel pliers with comfort grip handles.

### 9694 - Wheel Weight Balance Pliers



Multi Purpose Tool for Removing & installing wheel Balance weights also for removing Wheel Trims.



### 9695 - Copper Tubing Bending Pliers



Align, bend & adjust 3/16" (4.76mm) & 1/4" (6.35mm) steel or copper brake & fuel lines.  
Bends without distortion  
Indispensable tool

### 9696 - Trim Removal Pliers



Plastic coated comfort grip handles  
Wide nose design, spring loaded mechanism.  
Removes clips, door trims, staples, facia panels, trim supports without damage.  
Essential tool

### 9700 - Fuel Feed Pipe Pliers



For the release of fuel pipe connections during maintenance or when replacing the fuel filter. Compress the quick connect lugs for easy damage free removal.

### 9701 - Fuel Feed Pipe Pliers



Suitable for releasing in-line fuel line connections during vehicle servicing & maintenance.  
Plastic comfort grip handles  
Profiled aluminium alloy construction  
Alfa Romeo, Audi VW, Fiat, Lancia, Volvo.

### 9702 - Oil Cooler/ Heat Exchanger Pliers BMW/BMW Mini



For the release of the transmission oil cooler couplings while disconnecting the heat exchanger hoses on BMW/Mini.  
Series 1: E81, E82, E87 Series 3: E46, E90  
Series 5: E60 Series 6: E63 Series 7: E65  
X3: E83 X5: E53, E70 Z4: E85  
Mini: R50, R52, R53

### 9703 - Fuel Line Disconnection Set 3 Piece



Manufactured from chrome molybdenum with dipped plastic handles.  
For the easy release of snap connectors on fuel lines.  
Covers the majority of vehicles Including: Citroën, Fiat, Ford, General Motors, Peugeot & Renault.



## 9704 - Extendable reach Hose Clamp Pliers set 3 Piece



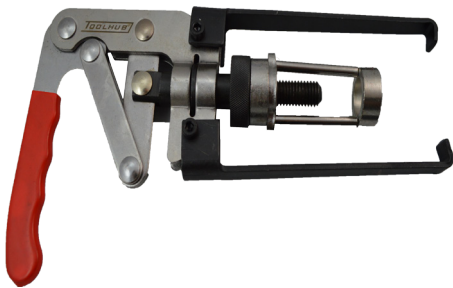
360° rotating deep slotted tips firmly grip hose clamps at any angle  
Includes straight, 45° & 90° angled heads for optimal positioning  
Fits most automotive and appliance spring wire hose clamps.

## 9706 - 10 in 1 Door Handle Clip Remover



For the removal of: trims & badges, windscreen wipers, door rubber / metal clip insert, door weather strip, door trim - bezel clip, door handle clip, headlamp spring clip tool, windscreen moulding clip, door rubber/plastic clip & a serrated edge to clean up panel seams.

## 9709 - Valve Spring Compressor



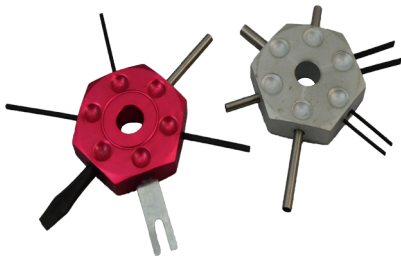
For a wide range of OHV, OHC and CHV engines  
Also Allows valve springs and valve stem oil seals to be replaced without the need to remove the cylinder head  
Not suitable for engines with deep seated valves.

## 9711 - Bearing Race & seal Driver Master set



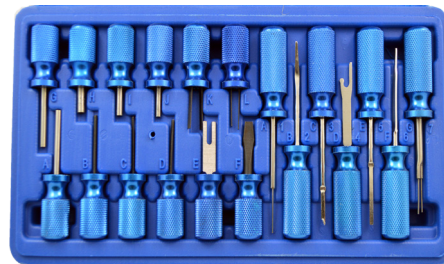
Makes it easier to insert wheel bearing race and seals without damage to race and axle housing.  
This master set includes nine disc sizes to fit most standard wheel bearings.  
Turn disc over to drive seals.  
Sizes: No. 1 - 1.565" No. 2 - 1.750" No. 3 - 1.965"  
No. 4 - 2.325" No. 5 - 2.470" No. 6 - 2.555" No. 7 - 2.830" No. 8 - 2.995" No. 9 - 3.180"

## 9712 - 2 Piece Terminal tool Set



Remove wires from terminals without damage to either.  
Also designed for Pack-Con and Weather-Pack terminals on GM C3 Systems and retrieval of trouble codes from engine computer on some GM/ Vauxhall model vehicles.

## 9713 Terminal tool Set 19 Piece



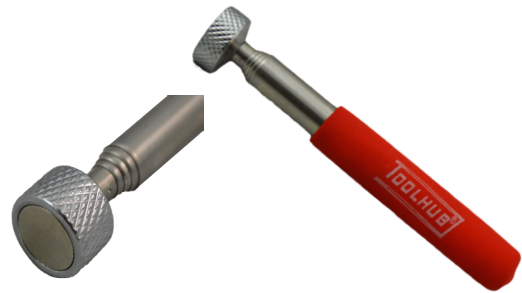
Comprehensive up to the minute Terminal Tool set which incorporates products for use on standard WeatherPack and Pack Con terminals, latest tool for new Volkswagen and Audi vehicles including special tools for coolant sensors, wiring harnesses and terminal blocks on Chrysler, Hyundai, Kia & Mitsubishi vehicles.

## 9714 - Terminal Crimping Tool 9"



Wire Stripper & Terminal Crimper  
225mm in Length  
Comfort Grip Handles

## 9716 - Telescopic magnetic Pick Up tool 2.5Kg



Strong magnet allowing a 2.5kg pick up capacity  
Stainless Steel shaft with comfortable grip handle.  
650mm Fully extended.

## 1103 - Mechanics Seat with Storage



Heavy Duty Manufactured From Strong Box  
Section High Strength Steel.  
Extra Thick Padded Seat For Extra Comfort  
Robust Under Seat Tool Tray  
Robust 0.60mm Rubber Wheels Provides Easy  
Manoverability.

## 9769 - Damaged Wheel Nut Impact Socket Set



Professional socket set that aids in removal of  
damaged or stripped lugnuts.  
Includes sizes : 17, 19, 21mm  
Length: 82mm

## 9685 - Flexible Magnetic Telescopic LED Light



3 Powerful LED's on a 360° flexible head  
Extends up to 55cm  
Powerful magnet holds up to 5lbs/2.3kg  
Pocket Clip, Magnetised base  
Aluminium body construction  
Efficient LED technology

## 9686 - Magnetic Pick Up Tool With Claw & LED Light



LED, Claw magnetic pick up tool  
Versatile 3 in 1 tool  
24 inch flexible reach  
4 claw grip for easy pick up  
Strong Magnetic Tip  
Bright LED lit Tip



### 9687 - Magnetic Pick Up Tool, Flexible Head, Windscreen Washer nozzle Cleaner



Extends up to 460mm with a flexible tip for hard to reach areas. It also includes a useful needle jet tool which is perfect for unblocking windscreen washer jets. With a very strong magnet capable of lifting up to 3.5 lbs. Useful pocket clip for easy storage.

### 9688 - VAG 1.0l 3 Cylinder Petrol Engine Timing Set



For Setting The Timing On The Following VAG Engines  
1.2 / 1.4 L 4-cylinder direct injection with turbocharger, built in Audi A3 / VW Golf from 2013  
1.0 L 3-cylinder, engine code: CHYA, CHYB, CPGA, built in Seat Mii / Skoda Citigo / VW Up.

### 9697 - Windshield Moulding & Door Handle Clip Pliers



For the removal of most windshield moulding and door handle clips.  
Releases clips to remove chrome molding on most windshields and rear glass. Offset handle permits easy access to molding clips. Slips under door handle without damage to panel material.

### 9699 - CVJ Boot Hose Clip Tool With Cutter



CV boot clamp installer  
With a built in cutter and winding mechanism enabling the banding to be tightened cut quickly and accurately.  
Essential tool for fixing CV boots  
Heavy-duty pliers with steel jaws and formed handles for extra comfort in use. Suitable for ear-type hose clips found on fuel, cooling system and vacuum hoses. Can also be used for securing late model GM CVJ boot clamps.

### 9705 - Universal Twin Cam Locking Tools



Universal tool designed to lock twin camshafts during timing belt replacement.  
Fits onto sprockets and extends to lock into sprocket teeth  
Fully adjustable to fit various diameters and tooth pitch.  
Suitable for locking between cam and diesel injection pump sprockets  
Suitable for both petrol and diesel engines.  
Can also be used to lock a diesel fuel pump to the camshaft sprocket

### 9707 - Brake Retainer Spring Removal Tool



For GM "J" and "X" body cars.  
Holds retainer ring for easy cylinder removal and installation.  
Easy to use.  
1. To remove cylinder, insert tips of tool into retainer ring and turn knob to expand ring.  
2. Remove ring and cylinder is free. Installation procedure is the reverse of removal.

## 9708 - 36" Pry Bar



Manufactured from chrome molybdenum steel for high strength.  
Comfortable grip handle  
30-degree bent tip for extra leverage.

## 9710 - Stud Extractor



1/2 in drive stud extractor for inserting and extracting stud bolts.  
One eccentric journalled knurled wheel grips against an internal fluting.  
Ranging from 5.5 to 19mm (7/32 - 3/4 in).

## 9715 - T Handle Universal Joint Socket set 3/8" Drive



Professional 3/8" universal joint socket set  
Sizes: 8, 10, 11, 12, 13, 14, 15, 16, 17, 18, 19mm  
Length: 340 mm  
T-bar width: 200 mm  
Presented in a robust zipped wallet

## 9717 - VAG V6 2.0, 2.8, & 3.0T, V8 & V10 Chain Drive Engines



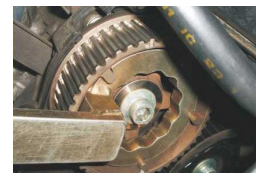
For Setting the Timing On Audi V6, V8 and V10 Chain Driven Engines.  
Camshaft locking tool OEM T40070  
Crankshaft locking pin OEM T40069  
Chain tensioner locking pin OEM T40071

## 9720 - Diesel Injector Shaft Cleaning Set

10 x Wire brushes  
(ø18 x 2, ø19 x 2, ø21 x 2, ø24 x 2, & ø26 x 2)  
2 x Cleaning brushes:  
9mm x 100mm x 300mm  
1 x Flexible bit holder  
1 x Adapter with brush holder  
1 x Mounting Bar  
1 x Twisted Brush Wire  
8 x Sealing Plugs  
1 x Plastic brush sleeve



## 9721 - Camshaft Pulley Wrench Subaru Impreza



Designed to hold the camshaft pulleys while removing and/or installing the central bolt.  
Special design avoids the possibility of damaging the pulley which is of composite plastic & steel construction.  
APPLCATIONS:

2002-2007 Subaru Impreza WRX  
2002-2007 Subaru Impreza WRX STI (only exhaust camshafts)  
2004-2008 Subaru Forester XT (only exhaust camshafts)  
2005-2010 Subaru Legacy GT (only exhaust camshafts)  
2005-2006 Saab 9-2X  
2004-2006 Subaru Baja



## 9722 - Camshaft Pulley Wrench Subaru (EJ207) Engine



Designed to hold the AVICS intake camshaft pulleys while removing and/or installing the central bolt. Special design avoids the possibility of damaging the pulley which is of plastic & steel construction.

### APPLICATIONS:

2004+ Impreza WRX STI  
2006+ Impreza WRX  
2004 - 2011 Forester XT  
2005 - 2010 Legacy GT  
2005 -2010 Outback XT  
2004-2006 Baja Turbo  
2006 Saab 9-2X Aero

## 9723 - Ratchet Adapter 1/2" Drive



Professional ratchet adapter, suitable for any 1/2" breaker bar.  
Smooth toothed mechanism  
On/Off reverse

## 9724 - Stud Extractor 1/2" Drive



A Heavy Duty Stud Extractor Used with either air or standard hand tools on 6-12mm studs. Manufactured from Chrome Vanadium with Chrome Molybdenum jaws, it is effective on rusted, damaged, broken or stripped studs.

## 9727 - 3/4" Power Bar 1000mm



A Heavy Duty 3/4" D 1000mm Power bar Manufactured from Chrome Vanadium Offers up 1 metre of leverage. Spare heads are available (9727-k)

## 9728 - 1" Power Bar 1000mm



A Heavy Duty 1" D 1000mm Power bar Manufactured from Chrome Vanadium Offers up 1 metre of leverage. Spare heads are available (9728-k)

## 9729 - 15 Piece 1/4" D Digital Torque Wrench Set



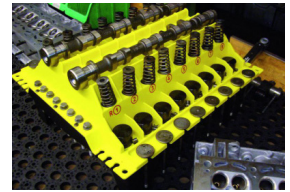
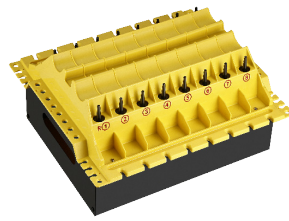
1/4" D x 200mm In Length  
Range 6-30Nm (4.4-22.1 Ftlb)  
+/- minus 4% accuracy  
72 teeth ratchet  
Automatic shut off, Peak & trace  
LED Buzzer & Alarm  
With a selection of bits & extension

## 9730 - Digital Torque Wrench 1/2"D



1/2"D x 200mm In Length  
Range 5-100Nm (3.6-73.5Ftlb)  
+/- minus 4% accuracy  
72 teeth ratchet  
Automatic Shut off  
Peak & Trace, 50 Position Memory  
LED & Buzzer Alarm

## 9731 - Cylinder Head Component Organiser



An essential tool that ensures all the components of your cylinder head during a rebuild are kept in order ready to be put back right where they came from  
Saves time, frustration and eliminates the worry of losing valuable parts.

## 9732 - Brake Bleeding Nozzle



This connector will fit most bleed tubes via the bleed nipple for bleeding either brakes or clutches  
Will fit some air operated bleeders as well as manual  
6 mm hose connection  
With retaining hook

## 9733- Motorcycle Brake Bleeding Hose



for bleeding fixed multi-piston calipers, with 2 bleeding valves (such as motorcycles)  
- incl. 2 bleeding adapters with hooks  
- silicone hoses  
- hoses length: 1060 mm - 1060 mm - 100 mm  
- hose diameter: inside 3 mm / outside 7 mm

## 9734 - Composite Rolling Work Seat



Durable & lightweight composite seat with 4 swivel casters and storage for various tools provides an easy mobile way of tackling those workshop jobs in comfort.

## 9735 - Ignition Coil Remover VAG



For the removal of pencil-type ignition coil on 4-cyl direct injection Generation 3 VAG petrol engines  
Golf 13 on, Audi A3 13 on, Seat Leon 13 on & Octavia 13 on.  
OEM T10530

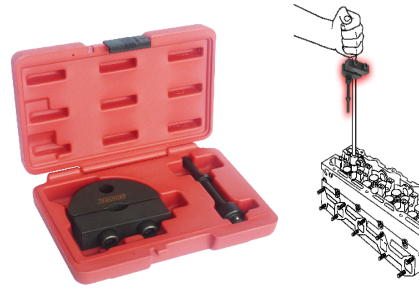


## 9736 - Oil Drain Plug Key Set



Dual sized drain plug key 8x10mm square 1/2"D  
1/2"D x 17mm socket  
Size: 8mmx10mm square  
32mm in Length  
Chrome Vanadium.  
Various Applications including:  
Renault Peugeot & some Volvos

## 9737 - Air Hammer Adapter for Injector Extractors



Allows the air hammer to vibrate the injector loose, in place of the traditional slide hammer. perfect for stubborn hard to shift injectors.  
Shank Size: .401" Parker Taper.

## 9738 - Brake Caliper Bleed Valve Bore Set



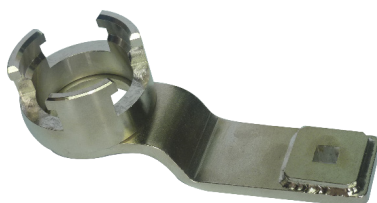
For boring out damaged bleed valves.  
The valve will be bored out complete with the thread and replaced with a threaded bush and a new bleed valve.  
Universal fitment.  
Brake caliper - bleed valve repair set (4-parts) 1/4" and 1/8" NPT  
Bleed valve-inserts:  
1 x NPT 1/4" (large)  
1 x NPT 1/8" (small)

## 9740 - Timing Chain Tensioner Lever VAG 1.8/2.0 TFSi



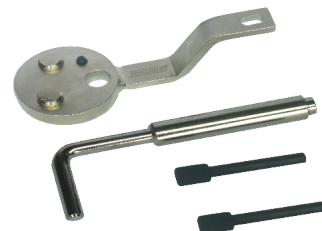
Suitable For  
1.8 litre Engine codes:  
CDAA/CDHA/CDHB/CJEB/CDAB/CGYA  
2.0 litre Engine Codes:  
CCZA/CDNB/CDNC/CFKA/CCZC/CPSA/CESA/  
CETA/CCZB/CDND/CCZD  
OEM T40243

## 9742 - Crankshaft Pulley Holding Tool Ford 1.8/2.0/2.4 Duratec



Designed To Counter hold the crankshaft pulley as the pulley retaining bolt is being loosened & tightened.  
Also for some Volvo vehicles.

## 9743 - Diesel Engine Timing Set Ford 2.2 TDCi



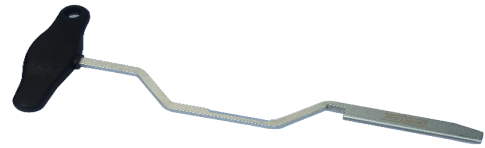
To lock the crankshaft and cam sprockets in their timed position allowing the removal and replacement of the cam chain & components.  
FORD 2.2 TDCI TRANSIT,  
FORD 2.2TDCI EConetic,  
FORD 2.2TDCI HDT  
TRANSIT TOURNEO 2.2 TDCi

## 9744 - VAG Oil Drain Plug Removal Tool



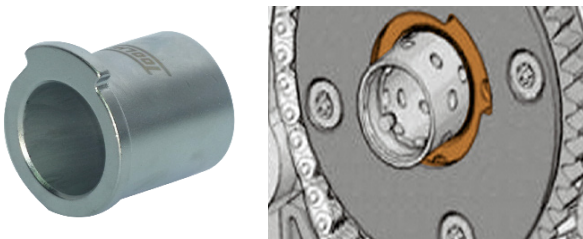
For the removal & refitting of the the plastic sump plug fitted to plastic sumps on VAG 1.8 and 2.0 TSI/TFSI petrol engines.  
VAG 2.0 4 cyl Turbo Direct Injection GEN III engines.

## 9745 - Assembly Lever 7 Speed DSG Gearbox VAG



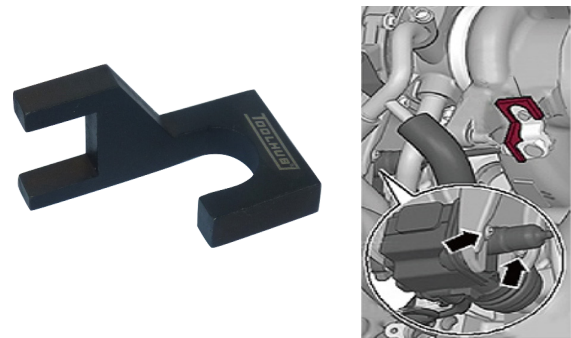
For DSG 7 speed dual clutch gearboxes fitted to the VAG range.  
OEM T10407  
Durable Composite handle

## 9746 - Camshaft Rotating Socket VAG 1.8/2.0 TFSI



Used to rotate and hold intake camshaft during timing chain service on 4-cylinder 1.8 and 2.0 liter TFSI direct injection engine (generation III).  
Audi A4 2008~A5 Cabriolet 2009~A5 Coupe 2008~Audi Q5 2008~Audi A3 2012~  
SEAT Alhambra 2011~SEAT Exeo 2009~Altea 2009~  
Leon 2009~Altea XL 2009~Altea Freetrack 2009~

## 9747 - Wastegate Setting Gauge VAG 1.8/2.0 TFSI



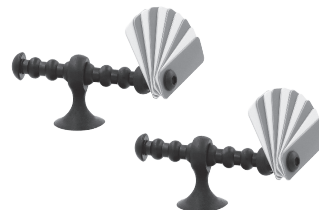
Used to lock the wastegate during adjustment work on the charge pressure On 4-CYL. 1.8L, 2.0L 4V TFSI direct injection engine (generation iii)

## 9748 - DCT Clutch Instalation & Removal Tool



Designed for the 6 speed DCT - Dual Clutch Transmission.  
Volvo C30, C70 (06 on) S40 (04 on) S60 (11 on) S80(07 on) S80L, V40 (13 on)  
V40 Cross Country, V50, V60, V70(08 on) XC60  
Ford focus (04> on) C-Max, S-Max, Galaxy, Mondeo (07 on) Kuga (13 on).

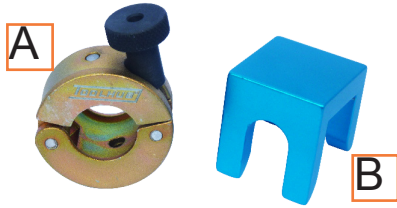
## 9749 - Panel Gap Guages



This set of panel gap gauges make it easy for the professional body repairer to ensure that the gaps are equal around the panel, also by checking existing gaps so they are to factory specifications.  
There are ten blades per gauge each 1mm in width and are made from a flexible plastic thus preventing damage to paintwork.



## 9750 - Fuel Line Removal Tools BMW Mini Cooper



**A:** Used to disconnect the fuel line from the high pressure fuel pump that is driven by the mechanical connection to the intake camshaft.

**B:** Used to disconnect fuel lines on BMW models. Especially useful on [2006-2011] BMW 3-Series and [2006-2009] X3 (E90 and E83). Also used to disengage the bottom connector of the high pressure fuel line on [2007-2013] Mini Cooper (turbo) engines.

## 9751 - Camshaft Locking Tool Subaru /Saab



Designed to lock the engine when replacing the timing belt on Subaru 2.0 and 2.5 litre and Saab 9-2X Aero DOHC Turbo Engines.

## 9752 - Aluminium Blending Hammer & Dent Tap Down Set



Ergonomically designed Aluminum dent hammer with screw-on tipped tap downs. Excellent as a blending hammer and for tapping dent high points and crowns.

## 9753 - Adjustable Master Bearing Race & Seal Driver 18-90mm



Twist the head to adjust Seal Driver from 3/4" to 3.5" (19mm to 89mm). Lock bolt holds the jaws to the preferred diameter. Tool has a Steel striking cap mounted on aluminum handle for efficient use.

## 9754 - 1/4" Ratchet Extension



Designed to extend your existing 1/4" Drive ratchet allowing it to be used in areas where space is tight. 40 lbft Of torque Maximum  
1 to 1 gear ratio  
Reach 10"  
Double sided drive  
Durable but light cast aluminium housing

## 9755 - 3/8" Ratchet Extension



Designed to extend your existing 3/8" Drive ratchet allowing it to be used in areas where space is tight 125 lbft torque Maximum  
1 to 1 gear ratio  
Reach 10"  
Double sided drive  
Durable but light cast aluminium housing

## 9756 - Motorcycle Spindle Tool 6 in 1



6 in 1 Motorcycle Spindle tool  
 Sizes: 12, 14, 17, 19, 22, 24mm  
 Applications include: 14mm for Yamaha XT660Z,  
 Kawasaki ER-6N, Versys 650  
 12mm for Front Axle for KTM etc.

## 9757 - Hand Impact Wrench 1/2" Drive



For the removal of stubborn bolts in hard to access areas, long reach saves time as other parts may not need to be removed.  
 The wrench is hit with a hammer which in turn shocks the bolt free.  
 Eye protection and the use of Impact sockets is recommended

## 9758 - Tie Rod End Socket 1/2" Drive



- Universal application.
- Fits most cars and some trucks.
- Designed for the quick and trouble-free removal and installation of the tie rod ends.
- After separating the ball joint from steering knuckle, slip tool over tie rod end and remove.

U-opening	34 x 18.5 mm	Length	57.5 mm
Inner Ø	49 mm	Drive	1/2" Square

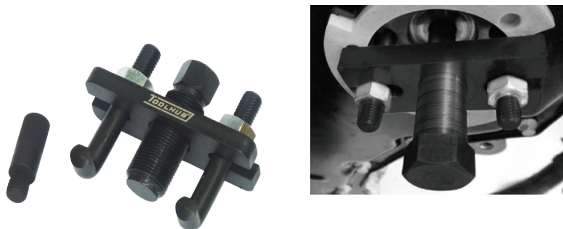


## 9759 - Lower Ball Joint Socket PSA 60mm



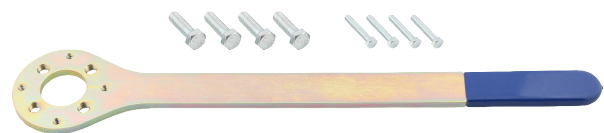
Lower Ball Joint Socket For PSA Applications  
 60mm

## 9760 - Diesel Pump Sprocket Puller Ford 2.2 TDCi



Ford Transit from 2011, 2.2 TDCi (Puma) also in Land Rover Defender 2.2 TD4 2001 to 2015.  
 Allows the pump to be removed without having to remove the timing chain.

## 9761 - Crankshaft Holding Tool Subaru



Toolhub Crank Pulley Tool allows you to safely remove the crank pulley without having to remove the radiator. It comes with 2 sets of removable pins allowing you to remove either style Subaru crank pulley.



## 9763 - Hand Brake Cable Spring Pliers



Allows for quick & easy removal and installation of the hand brake cable via the compression of the retaining spring.  
Applications: Audi, BMW, Citroën, Nissan, Peugeot, Renault, Rover, Seat, Volkswagen.

## 9764 - Stud Remover Set 5 Piece 14-17mm



Useful in hard to reach spaces.  
Sizes: 6, 8, 10, 12mm stud removers  
14mm & 17mm ratchet ring spanner.

## 9765 - Toolhub Anti Slip Wing Cover



Anti slip surface which is easy to clean with a mild detergent  
Resistant to oil, grease, water & other liquids  
Size 900mm x 610mm x 5mm.  
Larger size to cover more bodywork and prevent damage

## 9766 - Mechanics Kneeling Pad with LED Lights



Size: 460 x 270 x 30mm  
2 rows of powerful 12 SMD LED lights  
Water and oil resistant, ideal for breakdowns, wheel changing etc  
Easily wiped clean

## 9767 - Folding Mechanics Mat



Durable mechanics car mat  
Can be used for sitting, kneeling or lying on  
Length: 121cm  
Width: 42cm  
Thickness: 2.3cm

## 9768 - Folding Mechanics Mat With LED Lights.



Durable mechanics car mat  
Can be used for sitting, kneeling or lying on  
Length: 121cm  
Width: 42cm  
Thickness: 2.3cm  
Includes 6 x 4 powerful smd led lights